



Slabs & Cabs

Volume 66

Number 03

March 2013

Prez Says March 2013

Howdy Rockhounds!

The long anticipated 2013 Gem and Mineral Show has already come and gone. It was a whirlwind weekend, starting on Thursday afternoon with preliminary set up followed by a full set up day on Friday. A big thank you goes out to each and every one of you that helped in the area that you were able. A special thank you to Jerrold and Linda's kids and grand kids that come from out of town and help during the show. The show would not run so smoothly without the participation from each of you. Our Jr. members were a great asset at the show also. Several of them filled display cases and they all took turns working at different areas of the show. Make plans to get on board for the 2014 show, which will be the 1st weekend in March.

Most of you have heard we will not be meeting at the CC Museum of Science and History any longer. We have a new meeting location and the day has also changed, to the **third Thursday of the month**. Our new location is 4234 Weber Rd. Thank you to the Bridge Club of South Texas for sharing their space with us!

Jerrold has asked Russell Wheeler to be our speaker for the March meeting. Russell says he has an exciting presentation for us! Come on out and see what we can learn together.

The color for the month of March is Blue, so wear your blue outfits and bring your blue minerals for "It certainly is Exquisite but What the Dickens is it?" table.

See you **Thursday March 21st!**

Joe

INSIDE

- Presidents Message _____ Pg 1
- Club News and Information _____ Pg 2
- Club News continued _____ Pg 3
- Board Meeting Minutes _____ Pg 4
- Board Meeting Minutes _____ Pg 5
- Geologist Corner _____ Pg 6
- Birthstone _____ Pg 7
- Shop Keys & Rules _____ Pg 8
- Upcoming Events _____ Pg 9
- Kids Corner _____ Pg 10
- AFMS _____ Pg 11
- Last Page _____ Pg 12

Birthstone - Traditional
 Who in this world of ours their eyes
 In March first open shall be wise,
 In days of peril firm and brave,
 And wear a bloodstone to their grave.

2013 Board

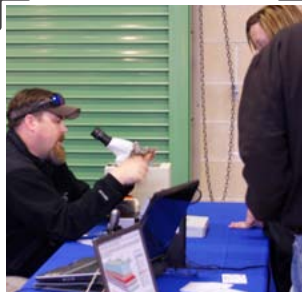
- President
Joe Grimes
 - Vice-President
Jerrold Simpson
 - Past President
Kevin Schleicher
 - Secretary
Gilbert Trejo
 - Treasurer
Gene Schade
 - Membership / Web master
Gene Schade
 - Newsletter
Sylvia Kernen, newsletter@gcgms.org
 - Education
open position
 - Librarian
Linda Simpson
 - Show / Dealer Chair
Jerrold Simpson
 - Show Publicity
Donna Grimes
 - Shop Coordinator
Mark Wolbrink
 - Field Trip Coordinator
open position
 - Federation Liaison
Joe Grimes
 - Historian
open position
 - Communications
Suzy Nick
 - Door Prizes
Michelle Alvarez
 - Refreshment Hostess
Theresa Cline
- www.gcgms.org

Club News & Information

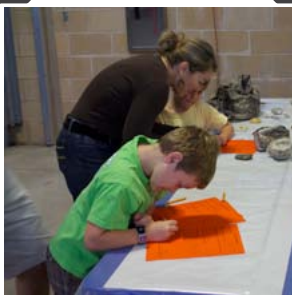
Our 51st Annual GCGMS Show in Pictures



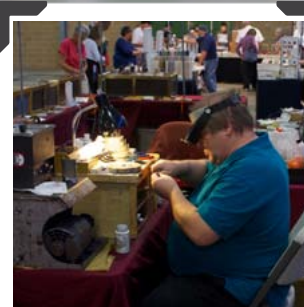
What to choose?



Russell volunteering his expertise



Adults and Kids enjoyed the scavenger hunt



Vendor at work



Junior Rockhound Volunteers at the Kids Table



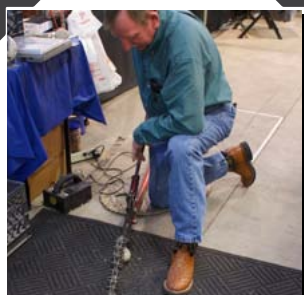
Junior Showcase



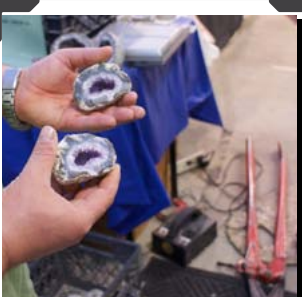
Junior Showcase



Junior Showcase



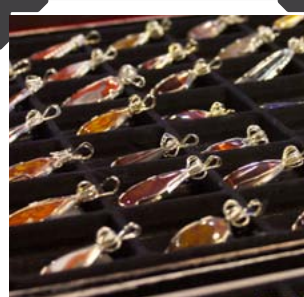
One of the highlights Geode Cracking



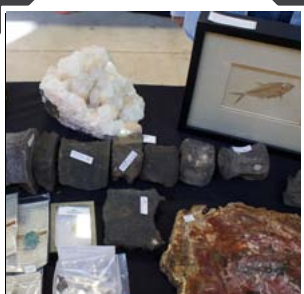
Geode



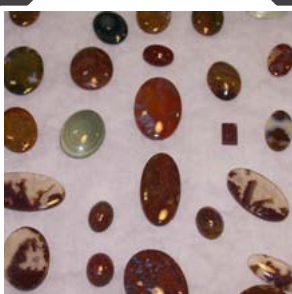
Mr. Patillo helping a young potential Rockhound



Wire-wrapped cabs



Rocks everywhere



Cabochons

More photos can be found online on Facebook

Club News & Information

Our 51st Annual GCGMS Show in Pictures

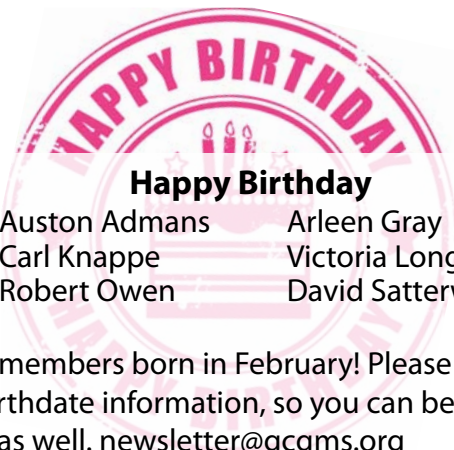
continued



Jerrold presenting the Brazilian agate geode to Emma Gomez of Corpus Christi.



Jerrold presenting the orthoceras and ammonite fossil plate from Madagascar to Marianne Jackson of Corpus Christi.



Happy Birthday

- | | | |
|-----|---------------|-------------------|
| to: | Auston Admans | Arleen Gray |
| | Carl Knappe | Victoria Longo |
| | Robert Owen | David Satterwhite |

and all members born in February! Please send me your birthdate information, so you can be mentioned as well. newsletter@gcgms.org



Welcome to our New Members!

A warm welcome goes out to our new members:

- James Dugat
- Donald Gray
- Arleen Grey
- Eric Yonedll
- Floyd Green
- April Swarts
- Jason Swarts
- Barry Watkins
- Laura Watkins
- Danny Gohlkf
- Jamie Gohlkf

- Madison Gohlkf
- Gary Cadogan
- Susan Cadogan
- Jay Jacko
- Lee Jacko
- James Fegett
- Cathy Fegett
- Harold Sullivan
- Dinah Sullivan
- Susie Luna-Saldana



Board Meeting Minutes 14 February 2013

of the Gulf Coast Gem & Mineral Society

The GCGMS Board Meeting for 02-14-13 was called to order by President Joe Grimes at 6:40 pm. The meeting was held at the Society Lapidary Shop. Those in attendance were Joe Grimes, Donna Grimes, Gene Schade, Mark Wolbrink, Jerrold Simpson, Linda Simpson, Sylvia Kernen and Gilbert Trejo.

Gene Schade gave the Treasurer's Report. Gene said the bulk of expenses were a flat lap and the two one thousand dollar scholarships. Gene went over Rock Show dealer revenue. Mark Wolbrink made a motion to accept the Treasurer's Report as presented and Jerrold Simpson seconded it. The motion was approved.

There were no changes to the Secretary Report in the Cabs and Slabs. Mark Wolbrink made a motion to accept the Secretary Report and Jerrold Simpson seconded it. All voted aye.

Gene Schade gave the Membership Report. The Membership List was emailed to the Board. He said there are two new memberships, James Dugat and Donald Gray and his wife Arleen. Gilbert Trejo made a motion to accept the Membership Report and Mark Wolbrink seconded it. All voted aye. Linda Simpson made a motion to accept the new members and Mark Wolbrink seconded it. All voted aye.

Mark Wolbrink gave the Shop Report. Mark said that the water service has been restored to the shop. Mark said we have received a 60 grit hard disk. Mark said the rock trim saw is working fine and he will try to sell it or take it to the Rock Show for sale. He said we have two tumblers that were received from the museum. Mark also asked for help moving material from the lab to the show. The discussion was made to try and meet the prior Thursday evening with a truck to move material. Linda Simpson made a motion to accept the Shop Report and Donna Grimes seconded it. All voted aye.

Linda Simpson gave the Education Report. Linda said that a presentation was made at Martin Middle School and there will be another presentation given to homeschoolers after the Rock Show

Jerrold Simpson gave the Rock Show Report. He said that he has been in contact with a retired geologist who is interested in selling his personal collection. Jerrold had some pictures of the geologist's display at a previous show. Jerrold said the geologist can also do mineral identification at the Rock Show. Gene Schade said mineral identification was being offered at the Touch Table. The Board did not take any action on the geologist's application at this time. Jerrold said he has been in contact with Panther Creek Mineral and they have expressed interest in attending the Rock Show. Jerrold said they would be a late dealer and if the Board wanted Jerrold could contact them. The Board agreed to have Jerrold Simpson contact Panther Creek Mineral to fill out a contract. Jerrold went over several companies that will not be at the Rock Show. Jerrold said he is in contact with the Fairgrounds for the next four year contract. This will be brought back later. Donna Grimes said all the advertising is set to go.

Donna said that Dee and Gene Schade will be doing an early morning TV interview.

Under old business, Joe Grimes asked Gene Schade to continue on as Treasurer with the resignation of Hank Swan due to health reasons. Joe Grimes made a motion for Gene Schade to be Treasurer for 2013 seconded by Jerrold Simpson. All voted aye.

Under new business, Joe Grimes said that there should be recognition for Letty Rodriguez for the twenty years of service as refreshment chairman. Donna Grimes said the item should be something nice such as jewelry. Gilbert Trejo made a motion to get Letty Rodriguez a piece of jewelry priced between fifty and seventy five dollars and there was no second. The discussion was that jewelry was personal and we did not know what Letty's preferences were. Gilbert Trejo made a motion to get Letty Rodriguez a mineral display with a price of fifty to seventy five dollars, seconded by Jerrold Simpson. All voted aye.

Linda Simpson showed the Board the table cloths that were ordered. Linda said that there was confusion on the company's web page and she thought she ordered fitted covers but got non-fitted covers. Linda said to send these covers back, we will have to pay a twenty percent restock fee and the shipping. Then the more expensive fitted cover can be ordered. The Board said for as much as we will use the covers the ones received will work fine. The Board had previously agreed by e-mail to reimburse Linda Simpson the cost of the covers.

Donna Grimes presented the plate that will be used for the raffle. Donna also presented the minerals and rocks purchased for the Kids Camp, the Lapidary Camp and possibly the Kids Wheel at the Rock Show. Donna went over the amounts needed for just this Kids Camp and Lapidary Camp and said if the Board wanted to purchase that amount or they could purchase the box amount which will make the price per item less. Gene Schade made a motion to buy the entire lot at the box amount, seconded by Jerrold Simpson. All voted aye.

Joe Grimes went over the table layout. Joe said that one dealer wants eight fronts and backs. Joe also said that several dealers may not come and others will replace them and we need to know how many tables they need. Joe wants to finalize the dealers and see how many tables are needed and print the table setup sheet for the Fairgrounds.

Mark Wolbrink makes a motion to adjourn at 8:59 pm seconded by Joe Grimes. All voted aye.

As the Board was still there, except for Sylvia Kernen, Joe Grimes call the meeting to order to discuss a memorial for Francis Martin. Donna Grimes made a motion to send a fifty dollar donation to the American Federation in memory of Francis Martin.

GCGMS Board Meeting Minutes March 5th, 2013 of the Gulf Coast Gem & Mineral Society

The meeting was called to order by Joe Grimes, President, at 7:13 PM.

Gene Schade gave the treasurer report. The final numbers for the 2013 show are not in yet. Every thing should be in by the next board meeting. Gene reported it appears we will be down a little from last year. Jerrold Simpson made a motion to accept the report as given. Mark Wolbrink seconded the motion and the report was accepted.

Mark Wolbrink gave the shop report. He reported we sold a lot of large rocks at the silent auction during the show. The sales were good and a lot of slabs were sold. The auctions were every 45 minutes instead of every hour as in the past. A "Buy It Now" sale for the last hour of the show. Linda Simpson made a motion to accept the report as given. Donna Grimes seconded it. The report was accepted as given.

The membership report was given by Gene Schade. He reported 130 adult and 31 junior members with 61 adult and 9 juniors paid. There were 8 renewals at the show and 7 new members. These were not a part of the count in Gene's report. Mark Wolbrink made a motion to accept the report and Donna Grimes Seconded. The motion carried.

Linda Simpson gave the education report. She and Jerrold Simpson have a presentation scheduled March 7 at Barnes Elementary, Corpus Christi. They have additional presentations scheduled in Sinton. There were 47 kids and 10 adults from St. Marys Academy of Beeville, TX, attended the 2013 show. Mark Wolbrink made a motion to accept the report and Donna Grimes seconded. The motion carried.

Jerrold Simpson reported that we had 25 dealers for our show this year. There were two new dealers this year, Panther Creek Minerals and Chaparral Gems. One of our long time dealers, J&K Designs (Better known as the Pearl Lady) was unable to attend due to family health problems. She had paid her fees prior to the problems arising. The board voted to refund her full amount.

Donna Grimes reported there were 178 visitors that had free tickets and 1,428 had paid for tickets. As the tickets were for both days, there were several that returned the next day, however they were not counted.

Mark Wolbrink made a motion to accept both portions of the show report. Linda Simpson seconded and the motion was carried.

Joe Grimes brought old business regarding sending a letter to the scholarship applicant that was not chosen. The letter

was to advise why they were not chosen and what to do to make the application better. Jerrold Simpson advised that the secretary was notified that the letter should be sent, however he did not know if it had been completed.

The board approved paying for clips for the new table cloths that were put on all the club tables. The clips are to hold the cloths on better. They were ordered after the table cloths.

The first item of new business discusses was the nomination of Rock Hound Of The Year. Mark Wolbrink was nominated for this year.

The Rolling Rock Club met at the show. They held an auction of items donated by some of our dealers and raised \$158.00. Those present voted to split that between the AFMS scholarship fund and the Gulf Coast Gem & Mineral Society scholarship fund.

Joe Grimes asked Linda Simpson, leader of the kids camp, to have everything out lined and members contacted for assistance, by the April Board meeting.

A new policy for selling equipment the club owns was put in place. Any equipment to be sold will be put up for bid. There will be a minimum bid set. All items will be listed in Slabs and Cabs and announced at the General Meeting, and will be available for inspection at the shop prior to sale.. There will be a deadline and all bids received by the posted deadline will be considered. All bids will be in writing to be considered for the item. High bid wins, and in the event that there is a duplicate high bid, there will be a drawing held, and the winner of the drawing will win the item.

The following new members were accepted by the board as required by the GCGMS by laws: Eric Yonedll, Floyd Green, April Swarts, Jason Swarts, Barry Watkins, Laura Watkins, Danny Gohlkf, Jamie Gohlkf, Madison Gohlkf, Gary Cadogan, Susan Cadogan, Jay Jacko, Lee Jacko, James Fegett, Cathy Fegett, Harold Sullivan, Dinah Sullivan, and Susie Luna-Saldana. Thank you all for joining the GCGMS and we look forward to seeing everyone at our next meeting. Be sure to bring your show and tell items and check the news letter for the color of the month.

Jerrold Simpson made a motion to adjourn the meeting, Gene Schade seconded the motion. The meeting was adjourned at 9:03 PM.

Respectfully submitted by Jerrold Simpson on behalf of Gilbert Trejo, Secretary.



Please welcome the

GEOLOGIST Corner

by Russell Wheeler

The annual GCGMS Gem, Mineral and Fossil show has come and gone for another year. A special thanks to all of those who volunteered their time to help make this show happen is rightfully deserved. The efforts of those volunteers and the dealers contributed to a wonderful assortment of earth's treasures in all shapes and sizes and colors. The diversity of all the geologic artifacts is a site to behold under one roof. Some of my highlights I saw were a fossilized mammoth hip bone which showed evidence of birth scarring on the fossil; many carats of wonderful gemstones with some rarities like Alexandrite and Petalite; Joe and Donna had some neat mineral specimens they recently acquired in Tucson like Topaz from Utah and Spessartite Garnets from China; the Clines had some beautiful Turquoise with small Pyrite inclusions they recently polished. As a geologist, I'm always looking for unique items that defy the imagination and one of the most unique displays I've ever seen is the Rock "Food" Table. Bill and Lois Patillo created one of the best displays of rocks that I've ever seen. Their hard work is truly imaginative and a fun way to put a twist on a "Rock Show Display".

One of my favorite things about a show is talking with the dealers about their stock, and usually one or two questions leads to the dealer grabbing a special item that might not be in plain view to all, but it might be the dealer's favorite specimen or a new piece that still needs a little work before unveiling it to the public. Usually the special items are incredible and worth the price of admission. Some of the "special" items I can recall from past shows were boulders full of Diopside crystals from Namibia, golf ball sized Tourmaline gemstones that weighed in excess of 200 carats, A large "watermelon" Tourmaline specimen on matrix which still had the pocket clay covering the specimen because it just came out of the ground 10 days before the show, and the largest North American Morganite crystal found to date which was purchased by the Smithsonian at the show. You never know what you might see, and that is what makes it so much fun.

This year, I had the pleasure of volunteering my time to the Identification table which Gene Schade and Casa De Oro sponsored. We were able to provide an excellent "touch" table where many people were able

to see examples of the different rock types and fossils commonly found. I witnessed many young kids taking an interest in the different rocks, and it put a smile on my face to see the future geologists of our planet find a spark of excitement through our science. Several people brought rocks of their own that they did not know what they were. With some careful observations, I was able to determine what they had, and usually the owners were surprised to find out it wasn't what they thought it was. I saw many heavy brown rocks that the owners thought were some type of extra-terrestrial space rocks, but were not from outer space at all. These rocks are known as iron nodules and are comprised mainly of Hematite, the mineral known as Iron Oxide. They are commonly formed in sedimentary deposits and they are typically left on the surface after the sediments erode around them. They are commonly misidentified as meteorites due to their heft and metallic composition. Unfortunately for the owners, they did not come from space, but right here on our own planet. If you have a rock that you are not sure of what it is, ask a geologist to identify for you; you might be holding a real treasure in your hand and you don't know it.



Photograph provided
by Russell Wheeler

All and all a rock and gem show is a wonderful place to see some of the treasures from our planet, but it's also a great place to meet others who share our interests and hobbies. The next time you have an opportunity to visit a rock and gem show take the time to see what's out there and visit with the dealers and volunteers, you never know what you might find!

And lastly, be sure not to miss the March Meeting as I will be presenting a discussion featuring the extraordinary mineral deposits of the Dundas District in Tasmania. You won't want to miss it because there will be some of the most beautiful mineral specimens in the world on display.

Birthstone for March - Aquamarine

Aquamarine

Chemistry:
 $Be_3Al_2(SiO_3)_6$, beryllium aluminium silicate

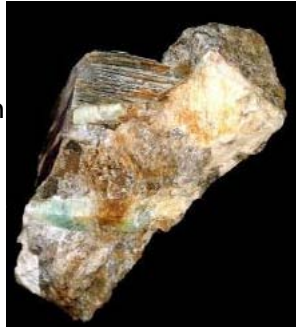
Subclass: Cyclosilicates

Class: Silicates

History of Amethyst

History of aquamarine

Aquamarine's name comes from the words "aqua" and "mare," meaning water and sea, from of its intense blue-green color. Because of its resemblance to the ocean, sailors used to wear talismans made of aquamarine depicting the god Neptune, who ruled the seas. With the help of their god, they believed the aquamarine would offer them protection from the elements.



*Aquamarine is a variety of the mineral beryl, shown here in its uncut state.
 Photo by Ron Eng*

Science of aquamarine

Aquamarine is a variety of the mineral beryl. Beryl generally forms inside granites as magma (molten rock) cools deep inside the Earth. Beryl comes in many different colors, ranging from clear to the deep green of the stones we know as emeralds. Aquamarine, though, is usually blue-green in color due to the presence of iron within the mineral's structure. Less desirable yellow or clear aquamarines can be heat-treated to produce the vibrant blue-green hue.



*Rough Aquamarine
 by Andy Koehler*

An alternate birthstone for March is bloodstone, a dark green opaque (cryptocrystalline) quartz flecked with red spots.

Source: http://www.burkemuseum.org/geology/birthstones_feb



Mystery Fossil



This fossil organism may not exhibit exceptional preservation, but then we don't want the Mystery Fossil to be too easy, now do we. Click on the image for a better look. If you can name this organism, you are a true expert!

Did you guess correctly?

<http://www.ucmp.berkeley.edu/historyoflife/mysteries/mystery45/mystery45.html>

Source: University of California Museum of Paleontology

<http://www.ucmp.berkeley.edu/>

Lapidary Shop Rules

1. The lapidary shop equipment may not be used by anyone who has not signed a liability waiver.
2. Shop equipment use flat fee is \$2.00 per hour. Sign in on arrival. Pay Supervisor and sign out before leaving the shop.
3. "Open shop" hours are to be used only by those who have taken the cabochon class or have shown proficiency on the equipment.
4. All children under the age of 17 must be accompanied by an adult trained on the use of the equipment.
5. Supervisor must inspect rock "set-up" prior to anyone starting slab saw.
6. Long hair should be tied back, loose sleeve should be secured, and safety procedures followed.
7. Safety glasses are recommended and are the responsibility of the individual. Some are furnished by the GCGMS, or you may bring your own.
8. The last person to use a piece of equipment before the shop closes is responsible for cleaning that piece of equipment and the work area. This may include tabletop, sponges, aprons, catch trays, etc.
9. Shop Supervisor is the final authority on shop rules and usage.

Revised May 2009

Lapidary Shop Keys

Lapidary Shop key masters are:

Shop Supervisor:
Mark Wolbrink 361-991-2495

Jerrold Simpson
361-851-8788 / Cell - 361-877-3073

Hank Swan 361-993-9861/361-857-2405



Please call one of these when you would like to use the shop. They will not all be available at the same time, and once in a while none of them will be available most of the time at least one of them should be able to work out a time and date the shop could be open for you. Remember the club has a lot of good equipment to use. Several different classes are being conducted on Monday evening from 6:00pm to 9:00pm. The shop is open during these times for use of the equipment even if you are not involved in a class. Shop is also open Saturday 9:00 Until Noon.



Shop News!

The shop will be **closed Saturday March 29th** (Saturday before Easter)

Remember, if you are interested in lapidary classes such as cabochon making or wire wrapping ask Mark, Jerrold or Hank. They are always happy to teach you.

Shop Supervisor: Mark Wolbrink 361-991-2495
Jerrold Simpson 361-851-8788 / Cell - 361-877-3073
Hank Swan 361-993-9861/361-857-2405

Upcoming Events

March 2013

March 16-17 LIVE OAK, TX (San Antonio) 52nd Annual show, "Fiesta of Gems;" Southwest Gem & Mineral Society; San Antonio Event Center, 8111 Meadow Leaf Dr. (corner of I-410 West and Marbach); Sat. 10-6, Sun. 10-4; adults \$5, seniors and military \$3, students with ID \$2, children under 12 \$1; parking \$3; for more info call 210-674-2424; www.swgemandmineral.org

MAR 23 MASON, TX: TEXAS TOPAZ DAY; annual celebration of our state gem; gem cutting demonstrations, shop for gems and jewellery from visiting gem dealers. Also, guided rock hounding for topaz and other minerals at local ranches (reservation required). For reservations for rock hounding, call Joyce Arnold, 325-347-6272. For details visit gothc.net The Texas Faceters Guild txfg.org will host a faceting seminar the following day.

April 2013

APR 13-14 ABILENE, TX: ANNUAL SHOW; Central Texas Gem & Mineral Society; Abilene Civic Center; N. 6th and Pine St.; Sat. 10-6, Sun. 10-5; adults \$3, children \$1.50; contact Linda Walker, PO Box 206, Hawley, TX 79525, (325) 537-4557; e-mail: linewalk@juno.com

APR 20-21 LUBBOCK, TX: 55TH ANNUAL SHOW; Lubbock Gem & Mineral Society; Lubbock Memorial Civic Center; 1501 Mac Davis Ln.; Sat. 9-5, Sun. 10-5; adults \$4, seniors \$3, students (6-12) \$2, children (under 6) and Scouts in uniform free; contact Walt Beneze, TX, (806) 797-5832; e-mail: walt@lubbockgemandmineral.org; www.lubbockgemandmineral.org

May 2013

MAY 25-26 FORT WORTH, TX: 62ND ANNUAL SHOW; Fort Worth Gem & Mineral Club; Amon Carter Exhibits Bldg., Will Rogers Memorial Center; 3401 W. Lancaster; Sat. 9-6, Sun. 10-5; adults \$5, seniors, students and military \$4, children (under 16) free; contact Steve Hilliard, PO Box 418, Decatur, TX 76234, (817) 925-5760; e-mail: fwgmc@embarqmail.com; fortworthgemandmineralclub.org

Happy Easter!



Kids Corner Rocks

Minerals

- Minerals are naturally occurring substances formed by geological processes. They are usually solid and feature a crystal structure as well as specific physical properties and chemical composition.
- Physical properties of minerals include crystal structure, hardness (Mohs scale), lustre (how it reflects light) and color, as well as more complicated properties such as streak, fracture, cleavage and density.
- Mohs scale of hardness measures the ability of minerals to scratch each other. Talc is very soft and is listed as 1, diamond is very hard and is measured as 10.
- A mineral is sometimes made up of just one chemical element but more often it is a compound (mixture) of two or more.
- For example, diamond is made up of just carbon, while fluorite is made up of a compound of calcium and fluorine.
- There are over 4000 different types of minerals.
- Only around 30 of these are commonly found in the Earth's crust.
- Examples of minerals include calcite, gypsum, feldspar, pyrite, gold, quartz and diamond.
- The precious gems ruby and sapphire are varieties of the mineral corundum.

source: <http://www.sciencekids.co.nz/sciencefacts/earth/rocksandminerals.html>

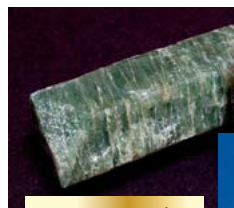
Igneous Rock Word Find

T E S B R P T F E X E W E A G
 O H V V A S Z T F V V T J V A
 P B J I K S I D O N I C W A B
 K X S Y S T A L P R S P A L B
 S C Y I A U C L O R U Y A Q R
 Y H O M D A R I T M R Q I J O
 X G G R N I D T I G T M C S K
 K E O O N T A C N F X M C Z E
 P M C L F R E N R I E G E X W
 X X S G O A M G A M F R R M N
 M F A S Y E N I T E R A B A R
 I Q K X B U G J Y B J N Y P O
 E R U P T I O N Z D B I B B O
 J X R S U O E N G I P T R T T
 L C S G Z Q G W A F P E S Y J

- | | | |
|-----------|-----------|-----------|
| BASALT | GEOLOGY | OBSIDIAN |
| BRECCIA | GRANITE | PEGMATITE |
| DIORITE | IGNEOUS | PUMICE |
| ERUPTION | INTRUSIVE | ROCK |
| EXTRUSIVE | LAVA | SYENITE |
| GABBRO | MAGMA | VOLCANO |



.....
 : What should we do with crude oil?
 : Teach it some manners of course!
 :



Apatite crystals



A block of talc
 Softest on Mohs scale



Diamond is the hardest natural material, and has a Mohs hardness of 10.



Check out some Cool Kids Links

- <http://www.kidsgeo.com>
- <http://www.rocksforkids.com>
- <http://earthquake.usgs.gov/learn/kids/>
- <http://www.bbc.co.uk/nature/fossils>
- <http://www.abc.net.au/beasts/fossilfun/>
- http://www.bbc.co.uk/sn/prehistoric_life/games/
- <http://www.oum.ox.ac.uk/thezone/fossils/inverts>
- <http://www.oum.ox.ac.uk/thezone/rocks/index>

AFMS Land Use Policy

From the AFMS website

1. Adherence to the AFMS Code of Ethics assures compliance with most statutes and regulations governing collecting on public lands and encourages respect for private property rights and the environment. Clubs are urged to read the AFMS Code of Ethics in at least one meeting every year, to publish the Code frequently in the club newsletter, and to compel compliance on club field trips.
2. Individuals and clubs are urged to write their elected representatives and land use management agency supervisors regarding issues of rule making, legislation and enforcement affecting field collecting of minerals and fossils.
3. Individuals and clubs are urged to join and support activities of the American Lands Access Association (ALAA), a sister organization with responsibility for advancing the interests of earth science amateurs with legislatures and land use management agencies.
4. The AFMS will receive a report from ALAA at its annual meeting.
5. The AFMS endorses the principle of multiple use of public lands as a guarantee of continuing recreational opportunities.
6. Wilderness and monument designations are inconsistent with the principle of multiple use. In view of the vast amount of public land already designated as wilderness and monuments, future such designations should be minimal, taking into account the increased demand for recreational opportunities, including rockhounding, created by a growing population.
7. In furtherance of the principle of multiple use, the AFMS believes that laws, regulations and rules established by relevant governmental authorities should be designed to allow freest possible access to all public lands, coupled with minimal restrictions on the recreational collection of minerals, fossils, gemstone materials and other naturally occurring materials.
8. A right to collect minerals and fossils on public lands should be protected by statute.
9. The AFMS urges its members to work with any or all government authorities to achieve a good working relationship in order to improve the "Public Image" of recreational collectors.



MEMBER of

American Federation of Mineralogical Societies



South Central Federation of Mineral Societies, Inc.



Meeting

Held the **third Thursday** each month at **6:30 pm** 4234 Weber Rd. in Corpus Christi September through May, and at the Lapidary Shop, 3933 Timon Blvd., Corpus Christi TX for **June through August**.

Membership Fees

Annual fees: **Individuals \$15.00, Couples \$20.00, Junior (under 17) \$5.00**

Purpose

The objective and purpose of the society is to disseminate knowledge of mineralogy, the earth sciences and the lapidary arts. To encourage study in these subjects through the means of: presentation of public exhibitions, field trips for exploration, study and collection of specimens, the presentations of lectures, illustrated programs, demonstrations and similar programs pertaining to the fields of mineralogy, earth sciences and the lapidary arts.

Mark your Calendars!



WWW

Visit us on our website www.gcgms.org



we are also on Facebook, come and 'like' us on there as well!

Next board meeting
2 April 2013
at the Lapidary Shop
6:30 pm - 9:00 pm

Slabs & Cabs
Sylvia Kernen
3942 FM 1781
Rockport TX 78382

Slabs & Cabs Awards



2003 SCFMS
Small Bulletins 4th place

PUBLICATION

2002 2nd
2001 1st
2001-4th place AFMS
2000 9th place SCFMS
1999-8th place SCFMS
1999- 9th place (new editor) AFMS

Permission is granted to use any article in this publication, provided proper credit is given.